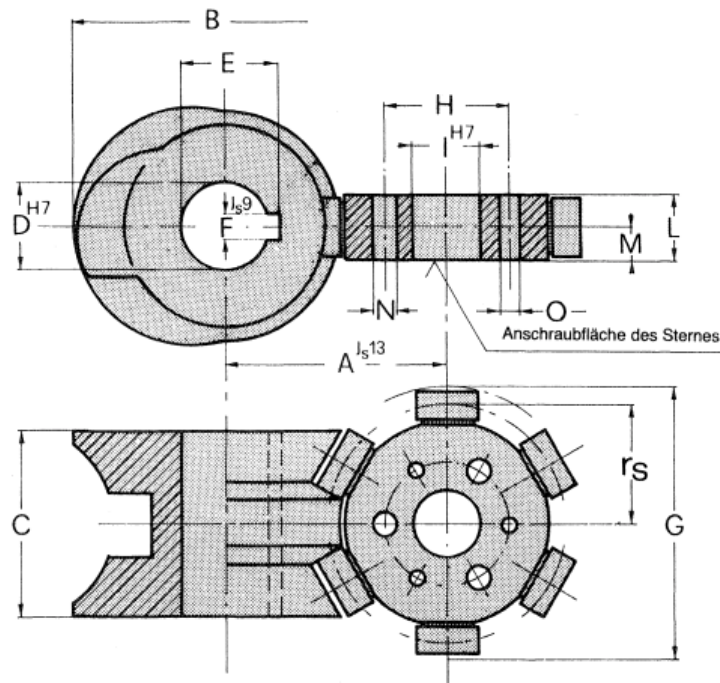


Abmessungen

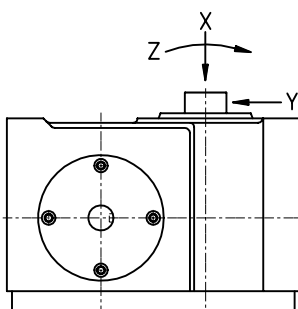
alle Darstellungen in der Mitte einer Rast



Typ	A	Kurve					Stern									
		ØB	C	ØD	E	F	ØG	ØH	ØI	L	M	n	N Ø	n	O Ø	r _s
50- 1A 12T-330/23	50	70	38	17	19.3	5	59	32	15	20	10	3	4.3	3	3.5	24
50- 2A 12T-180/3	50	70	38	17	19.3	5	59	32	15	20	10	3	4.3	3	3.5	24
50- 2A 12T-210/3	50	70	38	17	19.3	5	59	32	15	20	10	3	4.3	3	3.5	24
50- 2A 14T-240/3	50	66	38	17	19.3	5	66	32	15	20	10	3	4.3	3	3.5	27
50- 2A 14T-270/3	50	66	38	17	19.3	5	66	32	15	20	10	3	4.3	3	3.5	27
50- 2A 14T-300/3	50	66	38	17	19.3	5	66	32	15	20	10	3	4.3	3	3.5	27
50- 3A 12T-120/3	50	70	38	17	19.3	5	59	32	15	20	10	3	4.3	3	3.5	24
50- 3A 12T-150/3	50	70	38	17	19.3	5	59	32	15	20	10	3	4.3	3	3.5	24
50- 3A 14T-180/3	50	66	38	17	19.3	5	66	32	15	20	10	3	4.3	3	3.5	27
50- 3A 14T-210/3	50	66	38	17	19.3	5	66	32	15	20	10	3	4.3	3	3.5	27
50- 3A 14T-240/3	50	66	38	17	19.3	5	66	32	15	20	10	3	4.3	3	3.5	27
50- 3A 14T-270/3	50	66	38	17	19.3	5	66	32	15	20	10	3	4.3	3	3.5	27
50- 4A 12T-210/2	50	56	38	17	19.3	5	67	32	15	20	10	4	4.3	4	3.5	28
50- 4A 12T-240/2	50	56	38	17	19.3	5	67	32	15	20	10	4	4.3	4	3.5	28
50- 4A 12T-270/2	50	56	38	17	19.3	5	67	32	15	20	10	4	4.3	4	3.5	28
50- 4A 12T-315/3	50	56	38	17	19.3	5	67	32	15	20	10	4	4.3	4	3.5	28
50- 6A 12T- 90/1	50	70	38	17	19.3	5	59	32	15	20	10	3	4.3	3	3.5	24
50- 6A 12T-120/1	50	70	38	17	19.3	5	59	32	15	20	10	3	4.3	3	3.5	24
50- 6A 14T-150/1	50	66	38	17	19.3	5	66	32	15	20	10	3	4.3	3	3.5	27
50- 6A 14T-180/1	50	66	38	17	19.3	5	66	32	15	20	10	3	4.3	3	3.5	27
50- 6A 14T-210/1	50	66	38	17	19.3	5	66	32	15	20	10	3	4.3	3	3.5	27
50- 6A 14T-240/1	50	66	38	17	19.3	5	66	32	15	20	10	3	4.3	3	3.5	27
50- 6A 14T-270/1	50	66	38	17	19.3	5	66	32	15	20	10	3	4.3	3	3.5	27
50- 8A 12T-210/1	50	56	38	17	19.3	5	67	32	15	20	10	4	4.3	4	3.5	28
50- 8A 12T-240/1	50	56	38	17	19.3	5	67	32	15	20	10	4	4.3	4	3.5	28
50- 8A 12T-270/1	50	56	38	17	19.3	5	67	32	15	20	10	4	4.3	4	3.5	28
50-10A 12T-180/1	50	50	38	17	19.3	5	67	32	15	20	10	5	4.3	5	3.5	28
50-10A 12T-210/1	50	50	38	17	19.3	5	67	32	15	20	10	5	4.3	5	3.5	28
50-10A 12T-240/1	50	50	38	17	19.3	5	67	32	15	20	10	5	4.3	5	3.5	28
50-10A 12T-270/1	50	50	38	17	19.3	5	67	32	15	20	10	5	4.3	5	3.5	28

zulässige Belastungen

Stationen	Schaltwinkel	M_{stat} zulässiges statisches Abtriebsmoment in Nm	M_{dyn} zulässiges dynamisches Abtriebsmoment in Nm					
			50 min ⁻¹	100 min ⁻¹	200 min ⁻¹	350 min ⁻¹	500 min ⁻¹	800 min ⁻¹
1 (360° pro Schritt)	330	29	29	28	22	19	16	14
2 (180° pro Schritt)	180	30	30	29	26	21	16	16
	210	32	32	32	27	22	19	17
	240	50	50	50	42	35	30	26
	270	53	53	53	43	36	31	27
	300	55	55	54	44	37	32	28
3 (120° pro Schritt)	120	30	30	29	29	24	20	17
	150	33	33	33	30	26	22	19
	180	53	53	53	49	41	35	31
	210	57	57	57	50	42	36	32
	240	60	60	60	50	43	37	32
	270	62	62	62	51	43	37	33
4 (90° pro Schritt)	210	38	38	37	30	25	22	19
	240	41	41	37	30	26	22	19
	270	43	43	38	31	26	22	20
	315	48	48	48	41	34	30	26
6 (60° pro Schritt)	90	29	29	29	23	19	17	14
	120	34	34	31	25	21	18	16
	150	54	54	49	40	34	29	26
	180	59	59	50	41	34	30	27
	210	62	62	51	41	35	30	27
	240	64	62	51	41	35	30	27
	270	66	62	50	41	34	30	27
8 (45° pro Schritt)	120	39	39	39	33	27	24	21
	150	42	42	41	34	28	25	22
	180	45	45	42	34	28	25	22
	210	47	47	41	34	28	25	22
	240	48	48	41	33	28	24	22
	270	49	49	40	33	28	24	21
10 (36° pro Schritt)	180	47	47	47	38	32	28	25
	210	49	49	46	37	32	28	24
	240	50	50	45	37	31	27	24
	270	50	50	44	36	30	26	24



zulässige Kräfte auf die Abtriebswelle		
X	Y	Z
+ 2200 N -2500 N	2600 N	150 Nm