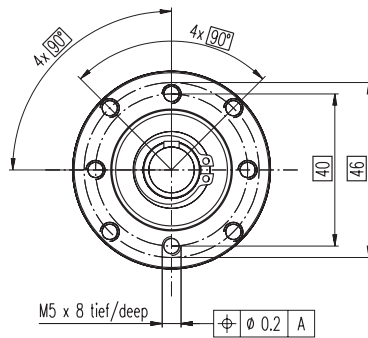
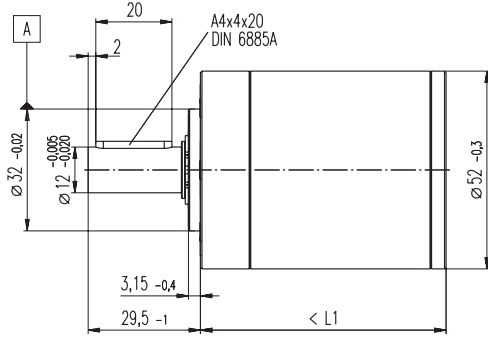


Planetary Gearhead GP 52 C $\varnothing 52$ mm, 4 - 30 Nm

Ceramic Version



Technical Data

Planetary Gearhead	straight teeth
Output shaft	stainless steel
Bearing at output	preloaded ball bearing
Radial play, 12 mm from flange	max. 0.06 mm
Axial play at axial load	< 5 N 0 mm > 5 N max. 0.3 mm
Max. permissible axial load	200 N
Max. permissible force for press fits	500 N
Sense of rotation, drive to output	=
Recommended input speed	< 6000 rpm
Recommended temperature range	-20 ... +80°C
Number of stages	1 2 3 4
Max. radial load	
12 mm from flange	500 N 700 N 900 N 900 N

M 1:2

- Stock program
- Standard program
- Special program (on request!)

Order Number

	223080	223083	223089	223094	223097	223104	223109
Gearhead Data							
1 Reduction	3.5 : 1	12 : 1	43 : 1	91 : 1	150 : 1	319 : 1	546 : 1
2 Reduction absolute	$7/2$	$49/4$	$343/8$	91	$2401/16$	$637/2$	546
3 Mass inertia gcm ²	20.7	17.6	17.3	16.7	17.3	16.8	16.4
4 Max. motor shaft diameter mm	10	10	10	10	10	10	10
Order Number	223081	223084	223090	223095	223099	223105	223110
1 Reduction	4.3 : 1	15 : 1	53 : 1	113 : 1	186 : 1	353 : 1	676 : 1
2 Reduction absolute	$13/3$	$91/6$	$637/12$	$338/3$	$4459/24$	$28561/81$	676
3 Mass inertia gcm ²	12	16.8	17.2	9.3	17.3	9.4	9.1
4 Max. motor shaft diameter mm	8	10	10	8	10	8	8
Order Number		223085	223091	223096	223101	223106	223111
1 Reduction		19 : 1	66 : 1	126 : 1	230 : 1	394 : 1	756 : 1
2 Reduction absolute		$169/9$	$1183/18$	126	$8281/36$	$1183/3$	756
3 Mass inertia gcm ²		9.5	16.7	16.4	16.8	16.7	16.4
4 Max. motor shaft diameter mm		8	10	10	10	10	10
Order Number		223086	223092	223098	223102	223107	223112
1 Reduction		21 : 1	74 : 1	156 : 1	257 : 1	441 : 1	936 : 1
2 Reduction absolute		21	$147/2$	156	$1029/4$	441	936
3 Mass inertia gcm ²		16.5	17.2	9.1	17.3	16.5	9.1
4 Max. motor shaft diameter mm		10	10	8	10	10	8
Order Number		223087	223093		223103	223108	
1 Reduction		26 : 1	81 : 1		285 : 1	488 : 1	
2 Reduction absolute		26	$2197/27$		$15379/54$	$4394/9$	
3 Mass inertia gcm ²		9.1	9.4		16.7	9.4	
4 Max. motor shaft diameter mm		8	8		10	8	
5 Number of stages		1	2	3	3	4	4
6 Max. continuous torque Nm		4	15	30	30	30	30
7 Intermittently permissible torque Nm		6	22.5	45	45	45	45
8 Max. efficiency %		91	83	75	75	68	68
9 Weight g		460	620	770	770	920	920
10 Gearhead length L1 mm		49.0	65.0	78.5	78.5	92.0	92.0



Combination

+ Motor	Page	+ Tacho / Encoder	Page	+ Brake	Page	Overall length [mm] = Motor length + gearhead length + (tacho / encoder / brake) + assembly parts						
RE40, 150 W 82						120.1	136.1	149.6	149.6	163.1	163.1	163.1
RE40, 150 W 82		MR Encoder	233			131.5	147.5	161.0	161.0	174.5	174.5	174.5
RE40, 150 W 82		Digital Encoder HED_55	236/238			140.8	156.8	170.3	170.3	183.8	183.8	183.8
RE40, 150 W 82		Digital Encoder HEDL 9140	241			174.1	190.1	203.6	203.6	217.1	217.1	217.1
RE40, 150 W 82				Brake 40	269	156.2	172.2	185.7	185.7	199.2	199.2	199.2
RE40, 150 W 82				Brake 28	270	164.1	180.1	193.6	193.6	207.1	207.1	207.1
RE40, 150 W 82		Digital Encoder HED_55	236/238	Brake 40	269	173.3	189.3	202.8	202.8	216.3	216.3	216.3
RE40, 150 W 82		Digital Encoder HEDL 9140	241	Brake 28	270	184.6	200.6	214.1	214.1	227.6	227.6	227.6
EC40, 120 W 159						119.1	135.1	148.6	148.6	162.1	162.1	162.1
EC40, 120 W 159		Digital Encoder HED_55	237/239			137.5	153.5	167.0	167.0	180.5	180.5	180.5
EC40, 120 W 159		Resolver 26	247			145.7	161.7	175.2	175.2	188.7	188.7	188.7
EC40, 120 W 159				Brake 40	269	149.9	165.9	179.4	179.4	192.9	192.9	192.9
EC45, 150 W 160						160.3	176.3	189.8	189.8	203.3	203.3	203.3
EC45, 150 W 160		Digital Encoder HEDL 9140	241			175.9	191.9	205.4	205.4	218.9	218.9	218.9
EC45, 150 W 160		Resolver 26	247			160.3	176.3	189.8	189.8	203.3	203.3	203.3
EC45, 150 W 160				Brake 28	270	167.7	183.7	197.2	197.2	210.7	210.7	210.7
EC45, 150 W 160		Digital Encoder HEDL 9140	241	Brake 28	270	184.7	200.7	214.2	214.2	227.7	227.7	227.7
EC45, 250 W 161						193.1	209.1	222.6	222.6	236.1	236.1	236.1
EC45, 250 W 161		Digital Encoder HEDL 9140	241			208.7	224.7	238.2	238.2	251.7	251.7	251.7
EC45, 250 W 161		Resolver 26	247			193.1	209.1	222.6	222.6	236.1	236.1	236.1
EC45, 250 W 161				Brake 28	270	200.5	216.5	230.0	230.0	243.5	243.5	243.5
EC45, 250 W 161		Digital Encoder HEDL 9140	241	Brake 28	270	217.5	233.5	247.0	247.0	260.5	260.5	260.5