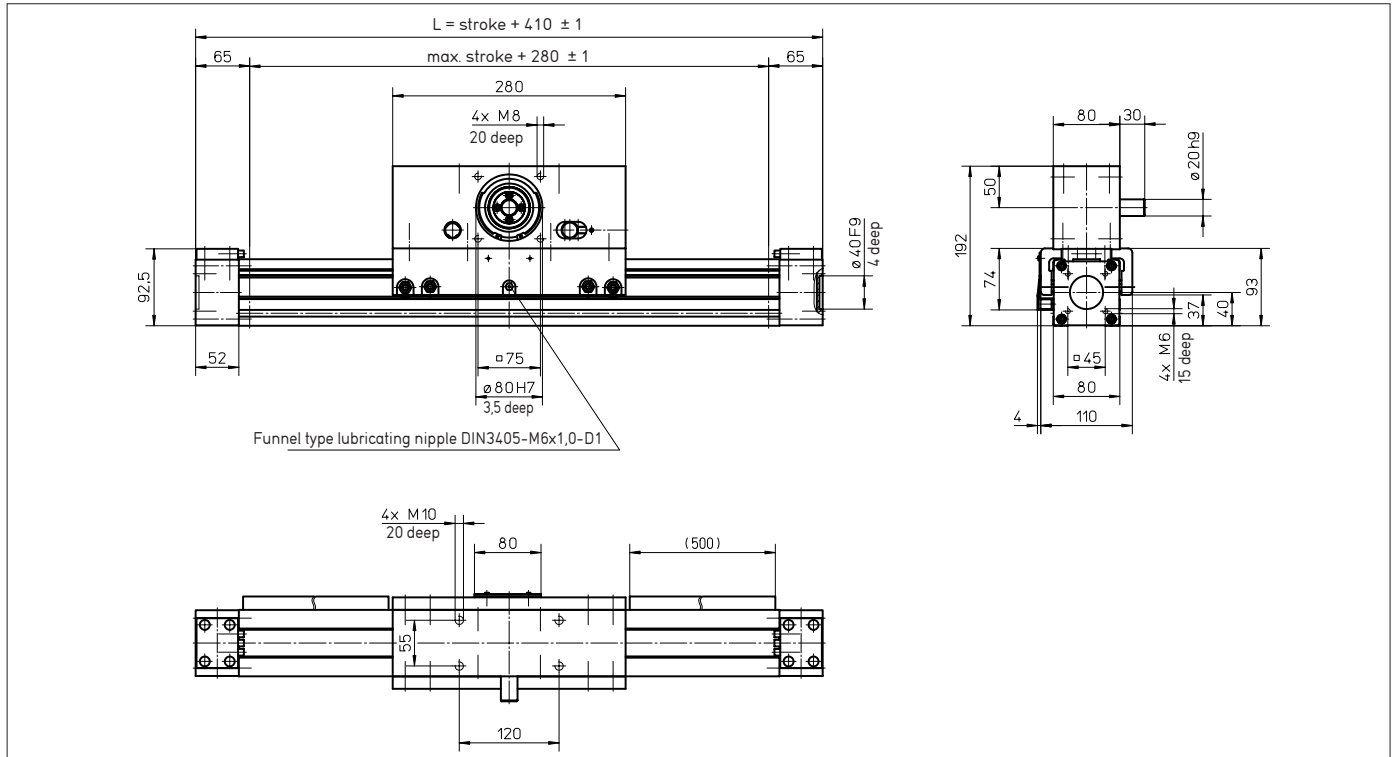


WIESEL SPEEDLine® WHZ80

with roller guideway and ATL toothed belt



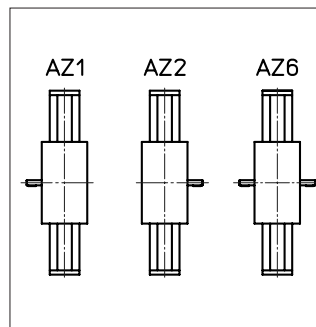
Note: Mounted wipers on request. The use of a long power bridge increases the total length.

Technical data

- Linear speed: _____ max. 10 m/s
- Repeatability: _____ ± 0.05 mm
- Acceleration: _____ max. 40 m/s²
- Drive element: _____ Toothed belt 32ATL5
- Pulley diameter: _____ 63.66 mm
- Stroke per revolution: _____ 200 mm
- Stroke length: _____ up to 3000 mm
- Length of power bridge: _____ 280 or 450 mm, see page 26
- Geometrical moment of inertia: I_y 1.93 · 10⁶ mm⁴
 I_z 1.80 · 10⁶ mm⁴
- Weights
Basic unit with zero stroke: _____ 11.20 kg
100 mm stroke: _____ 0.91 kg
Power bridge with carriage: _____ 6.65 kg

Execution of drive shafts

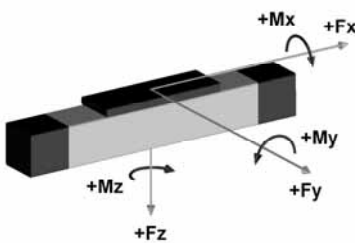
(Detailed description see page 123)
Other executions on request.



Idle torques [Nm]

Rotational speed [rpm]	M _{idle} [Nm]
150	2.4
1500	3.5
3000	5.0

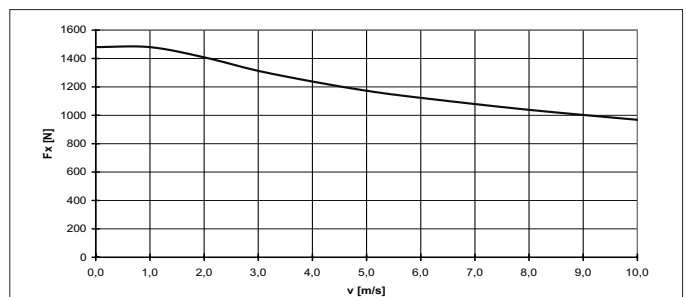
Loads and load moments



Load	dynam. [N]
F _x drive ¹⁾	max. 1480
F _y	882
±F _z	2100

Load moment	dynam. [Nm]
M _x	75
M _y ²⁾	230
M _z ²⁾	100

F_x depending on the linear speed



Order Code see page 123

¹⁾ Depending on the speed, see respective chart.

²⁾ Increase of the admissible values by the use of a long power bridge or additional free-sliding power bridge (page 26 and 27).