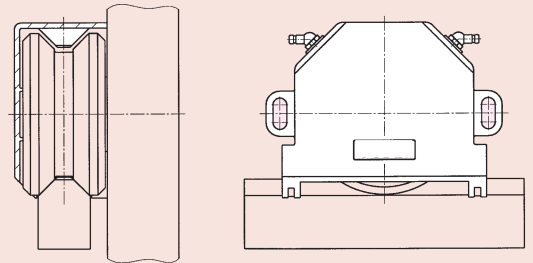


BAUGRÖSSE 20

TAILLE 20
SIZE 20

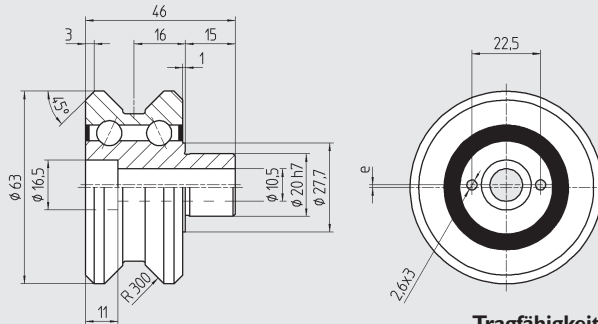


Konstruktionsabmasse
Cotes de montage
Mounting dimensions

Führungsrolle

Galet de guidage

Roller for vee bars



DIN 912 8.8 M_A
M10x50 48 Nm

Tragfähigkeit / Capacité de charge / Load carrying capacity

Type	Part No.	Excenter	G _a (µm)	Mat.	m (kg)	C _w (N)	C _w ^① (N)	C _w ^② (N)	n _{max} (min ⁻¹)	
FR 20	900 720	1 mm	+6/+23	100Cr6	1.3505	0,50	9 500	10 200	2 200	7 000
FR 20 A	900 721	1 mm	-3/+5	100Cr6	1.3505	0,50	8 600	9 000	2 000	7 000
FR 20 Z	900 722	0 mm	+6/+23	100Cr6	1.3505	0,50	9 500	10 200	2 200	7 000
FR 20 ZA	900 724	0 mm	-3/+5	100Cr6	1.3505	0,50	8 600	9 000	2 000	7 000
FR 20 R	900 723	1 mm	+6/+23	X46Cr13	1.4034	0,50	7 100	7 500	1 650	7 000

G_a Axiale Lagerluft, jeu axial, internal axial clearance

Weg, Chemin parcouru, Distance: ① 10⁶m ② 10⁸m

Befestigungsflansch

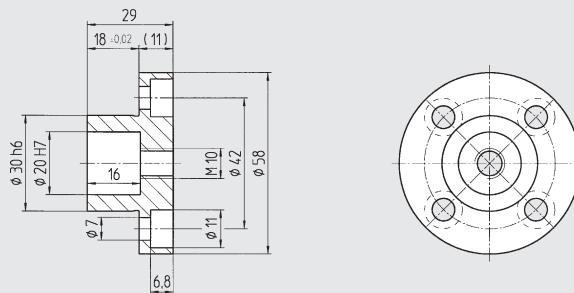
Bride de fixation

Mounting flange

brüniert

noirçi

black oxide



DIN 912 8.8 M_A
M6x16 9,9 Nm

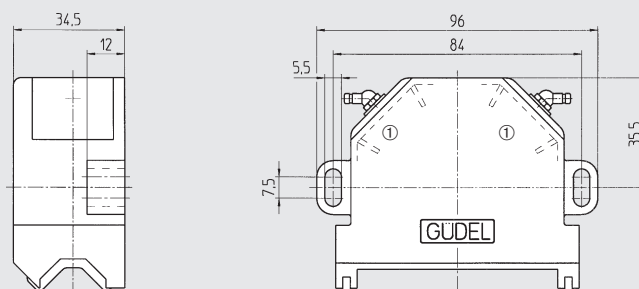
Type	Part No.	Mat.	m (kg)
SP 20	902 021	Ck45	1.1191 0,25
SPE 20	902 042	Ck45	1.1191 0,18

Seite / Page 01.52

Abstreifer-Schmiereinheit

Racleur graisseur

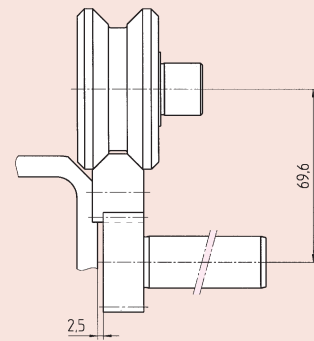
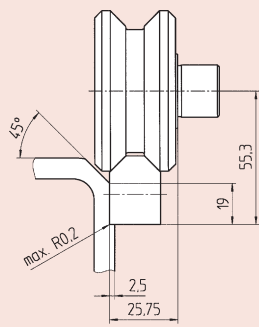
Wiper and lubrication unit



DIN 912 8.8 M_A
M5x20 5 Nm

① Ölgetränkter Filz
Feutre imbibé d'huile
Oil soaked felt inserts

Type	Part No.	Mat.	m (kg)
RA 20	900 042	PA-6/POM	0,04

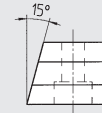
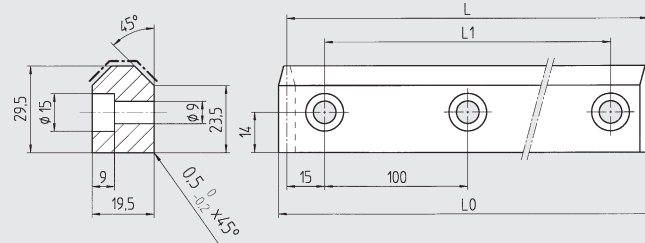
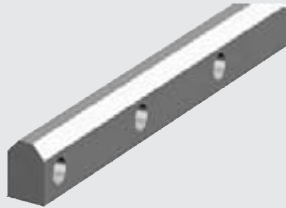


Konstruktionsabmasse
Cotes de montage
Mounting dimensions

Führungsschiene

Rail de guidage

Guideway vee bar



Type	Part No.	L	L ₀	L ₁	Mat.	m (kg)
FS 200	900 320	1 030	1 035.23	1 000	58CrMoV4 1.7792	4,00
	900 321	630	635.23	600	58CrMoV4 1.7792	2,50
	900 322	330	335.23	300	58CrMoV4 1.7792	1,30
FS 200 R	900 992	630	635.23	600	X42Cr13 1.2083	2,40



DIN 912 8.8 M_A
M8x20 24 Nm

Führungszahnstange

Rail crémaillère de guidage

Guideway vee rack

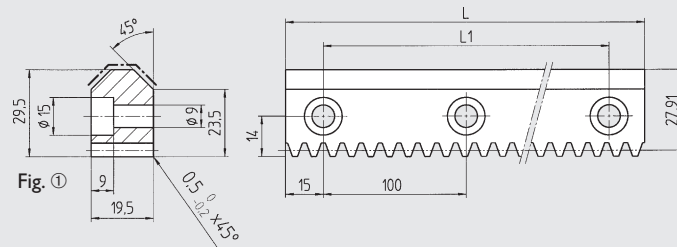
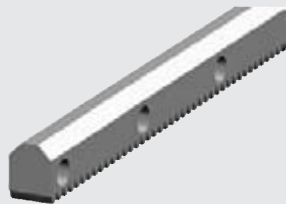


Fig. ②

Type	Part No.	L	L ₁	Module p	Fig.	Mat.	m (kg)
FZ 20	900 120	1 030	1 000	1.5915 5,0	①	58CrMoV4 1.7792	3,90
	900 121	630	600	1.5915 5,0	①	58CrMoV4 1.7792	2,40
	900 122	330	300	1.5915 5,0	①	58CrMoV4 1.7792	1,25
FZ 20 G	900 070	1 030	1 000	1.5915 5,0	②	58CrMoV4 1.7792	3,90
	900 071	630	600	1.5915 5,0	②	58CrMoV4 1.7792	2,40
	900 072	330	300	1.5915 5,0	②	58CrMoV4 1.7792	1,25
FZ 20 R	900 997	630	600	1.5915 5,0	②	X42Cr13 1.2083	2,40

weich, soft
Quality
7h25

hart, trempé
Quality
6h23



Einbau
Montage / Assembly
Seite / Page 01.71

Antriebsritzel

Pignon

Drive pinion

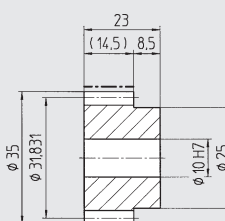
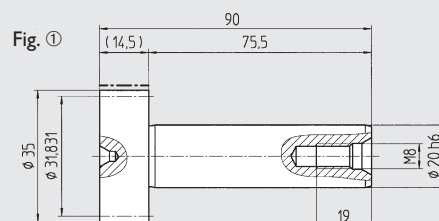
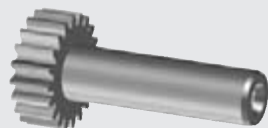


Fig. ②

Type	Part No.	z	Module p	Fig.	Mat.	m (kg)
WR 20	900 920	20	1.5915 5,0	①	16MnCr5 1.7131	0,30
MR 5	154 050	20	1.5915 5,0	②	16MnCr5 1.7131	0,10

hart, trempé
Quality
6f24