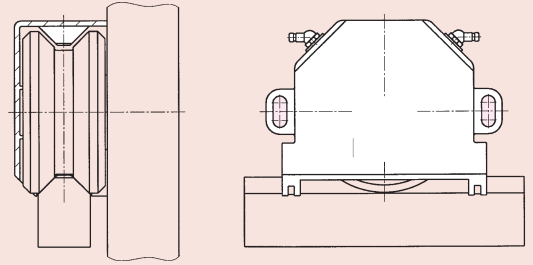


BAUGRÖSSE 15

TAILLE 15
SIZE 15

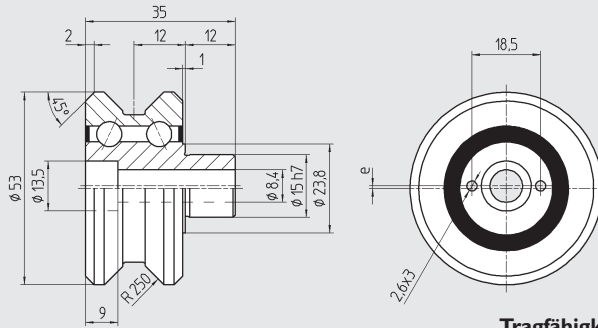


Konstruktionsabmasse
Cotes de montage
Mounting dimensions

Führungsrolle

Galet de guidage

Roller for vee bars



DIN 912 8.8 M_A
M8x35 24 Nm

Tragfähigkeit / Capacité de charge / Load carrying capacity

Type	Part No.	Excenter	G _a (µm)	Mat.	m (kg)	C _{ow} (N)	C _w ① (N)	C _w ② (N)	n _{max} (min ⁻¹)	
FR 15	900 715	1 mm	+6/+23	100Cr6	1.3505	0,25	6 800	7 200	1 560	9 000
FR 15 A	900 716	1 mm	-3/+5	100Cr6	1.3505	0,25	6 100	6 500	1 400	9 000
FR 15 Z	900 717	0 mm	+6/+23	100Cr6	1.3505	0,25	6 800	7 200	1 560	9 000
FR 15 ZA	900 719	0 mm	-3/+5	100Cr6	1.3505	0,25	6 100	6 500	1 400	9 000
FR 15 R	900 718	1 mm	+6/+23	X46Cr13	1.4034	0,25	5 100	5 400	1 170	9 000

G_a Axiale Lagerluft, jeu axial, internal axial clearance

Weg, Chemin parcouru, Distance: ① 10⁶m ② 10⁸m

Befestigungsflansch

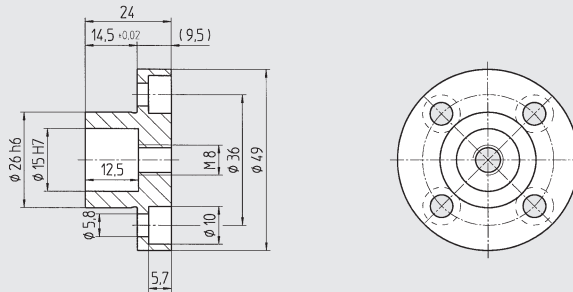
Bride de fixation

Mounting flange

brüniert

noirçi

black oxide



DIN 912 8.8 M_A
M5x16 5,75 Nm

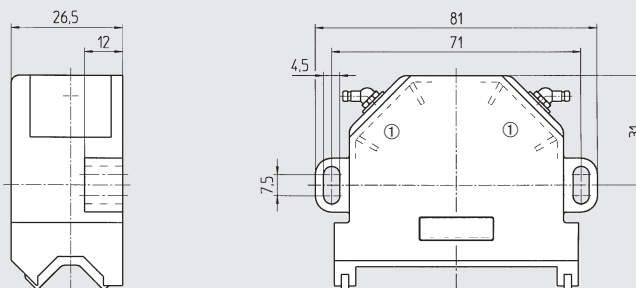
Type	Part No.	Mat.	m (kg)
SP 15	902 016	Ck45	1.1191 0,15
SPE 15	902 041	Ck45	1.1191 0,11

Seite / Page 01.52

Abstreifer-Schmiereinheit

Racleur graisseur

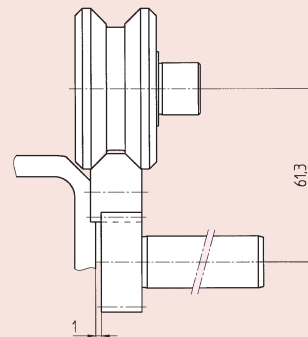
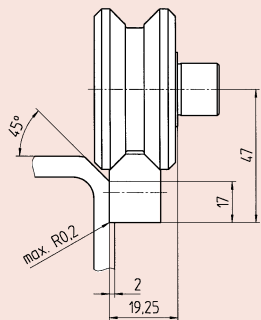
Wiper and lubrication unit



DIN 912 8.8 M_A
M4x18 2,9 Nm

① Ölgetränkter Filz
Feutre imbibé d'huile
Oil soaked felt inserts

Type	Part No.	Mat.	m (kg)
RA 15	900 041	PA-6/POM	0,03

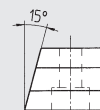
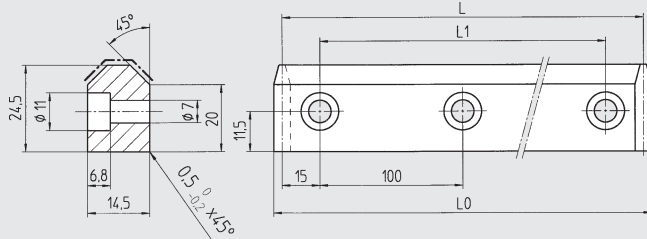
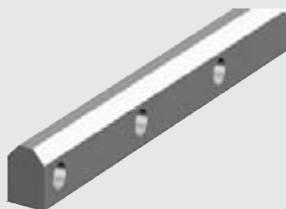


Konstruktionsabmasse
Cotes de montage
Mounting dimensions

Führungsschiene

Rail de guidage

Guideway vee bar



Type	Part No.	L	L ₀	L ₁	Mat.	m (kg)
FS 150	900 315	1 030	1 033.89	1 000	58CrMoV4 1.7792	2,60
	900 316	630	633.89	600	58CrMoV4 1.7792	1,60
	900 317	330	333.89	300	58CrMoV4 1.7792	0,85
FS 150 R	900 991	630	633.89	600	X42Cr13 1.2083	1,60

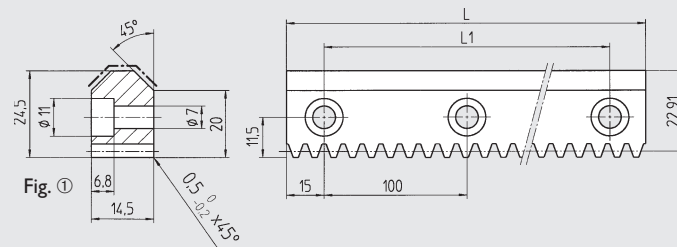
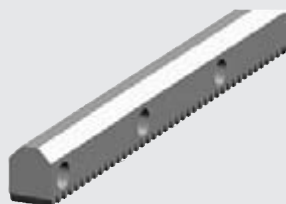


DIN 912 8.8 M_A
M6x16 9,9 Nm

Führungszahnstange

Rail crémaillère de guidage

Guideway vee rack



Type	Part No.	L	L ₁	Module	p	Fig.	Mat.	m (kg)
FZ 15	900 115	1 030	1 000	1.5915	5,0	①	58CrMoV4 1.7792	2,40
	900 116	630	600	1.5915	5,0	①	58CrMoV4 1.7792	1,50
	900 117	330	300	1.5915	5,0	①	58CrMoV4 1.7792	0,80
FZ 15 G	900 060	1 030	1 000	1.5915	5,0	②	58CrMoV4 1.7792	2,40
	900 061	630	600	1.5915	5,0	②	58CrMoV4 1.7792	1,50
	900 062	330	300	1.5915	5,0	②	58CrMoV4 1.7792	0,80
FZ 15 R	900 996	630	600	1.5915	5,0	②	X46Cr13 1.2083	1,50

weich, soft
Quality
7h25

hart, trempé
Quality
6h23

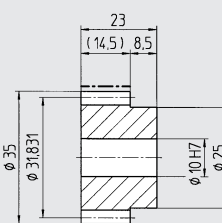
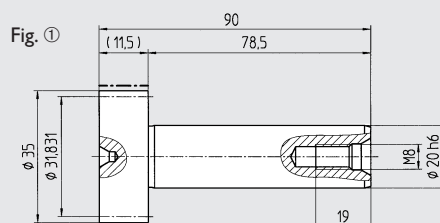
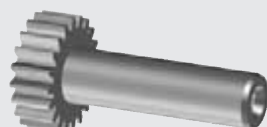


Einbau
Montage / Assembly
Seite / Page 01.71

Antriebsritzel

Pignon

Drive pinion



Type	Part No.	z	Module	p	Fig.	Mat.	m (kg)
WR 15	900 915	20	1,5915	5,0	①	16MnCr5 1.7131	0,25
MR 5	154 050	20	1,5915	5,0	②	16MnCr5 1.7131	0,10

hart, trempé
Quality
6f24

p (mm) Teilung, pas, pitch