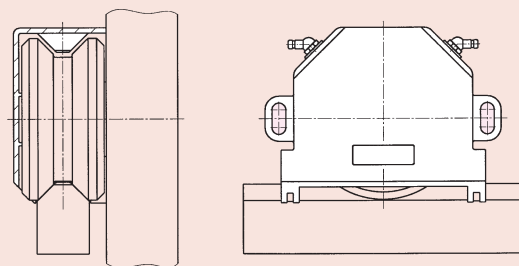


BAUGRÖSSE 10

TAILLE 10
SIZE 10

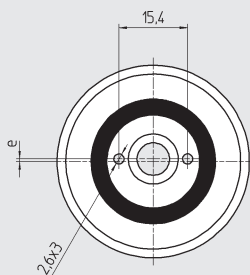
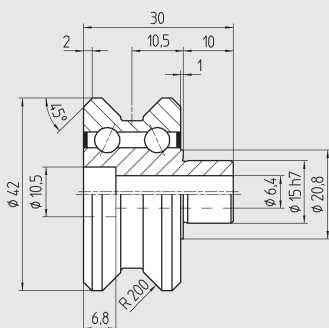


Konstruktionsabmasse
Cotes de montage
Mounting dimensions

Führungsrolle

Galet de guidage

Roller for vee bars



DIN 912 8.8 M_A
M6x30 9,9 Nm

Tragfähigkeit / Capacité de charge / Load carrying capacity

Type	Part No.	Excenter	G _a (µm)	Mat.	m (kg)	C _{0w} (N)	C _w ^① (N)	C _w ^② (N)	n _{max} (min ⁻¹)	
FR 10	900 710	1 mm	+6/+23	100Cr6	1.3505	0,15	5 300	4 900	1 060	12 000
FR 10 A	900 711	1 mm	-3/+5	100Cr6	1.3505	0,15	4 800	4 400	950	12 000
FR 10 Z	900 712	0 mm	+6/+23	100Cr6	1.3505	0,15	5 300	4 900	1 060	12 000
FR 10 ZA	900 714	0 mm	-3/+5	100Cr6	1.3505	0,15	4 800	4 400	950	12 000
FR 10 R	900 713	1 mm	+6/+23	X46Cr13	1.4034	0,15	3 900	3 700	800	12 000

G_a Axiale Lagerluft, jeu axial, internal axial clearance

Weg, Chemin parcouru, Distance: ① 10⁶m ② 10⁸m

Befestigungsflansch

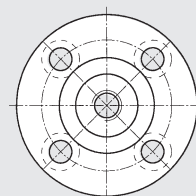
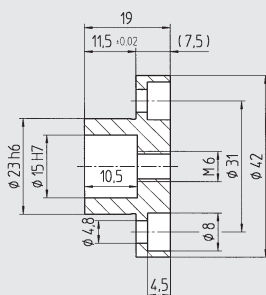
Bride de fixation

Mounting flange

brüniert

noirçi

black oxide



DIN 912 8.8 M_A
M4x12 2,9 Nm

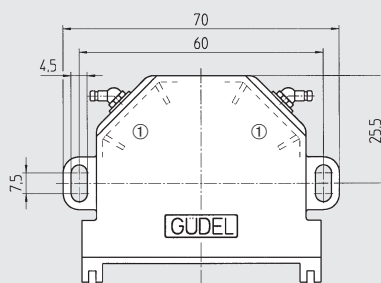
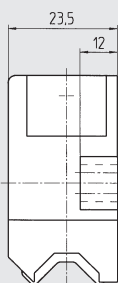
Type	Part No.	Mat.	m (kg)
SP 10	902 011	Ck45	1.1191 0,1
SPE 10	902 040	Ck45	1.1191 0,07

Seite / Page 01.52

Abstreifer-Schmiereinheit

Racleur graisseur

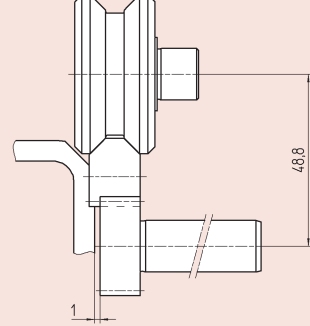
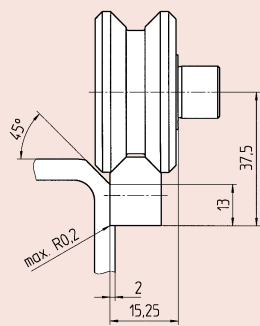
Wiper and lubrication unit



DIN 912 8.8 M_A
M4x18 2,9 Nm

① Ölgetränkter Filz
Feutre imbibé d'huile
Oil soaked felt inserts

Type	Part No.	Mat.	m (kg)
RA 10	900 040	PA-6/POM	0,025

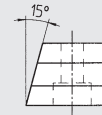
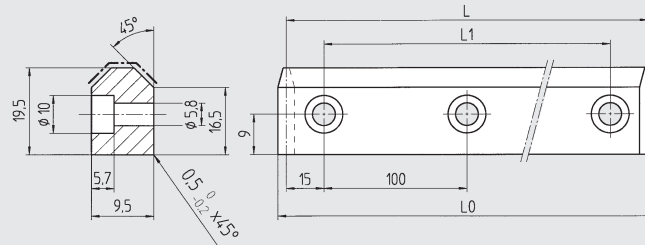
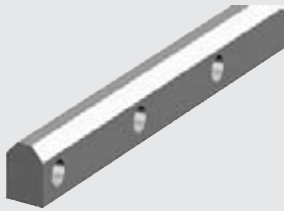


Konstruktionsabmasse
Cotes de montage
Mounting dimensions

Führungsschiene

Rail de guidage

Guideway vee bar



Type	Part No.	L	L ₀	L ₁	Mat.	m (kg)
FS 100	900 310	1 030	1 032.55	1 000	58CrMoV4 1.7792	1,40
	900 311	630	632.55	600	58CrMoV4 1.7792	0,85
	900 312	330	332.55	300	58CrMoV4 1.7792	0,45
FS 100 R	900 990	630	632.55	600	X46Cr13 1.4034	0,85

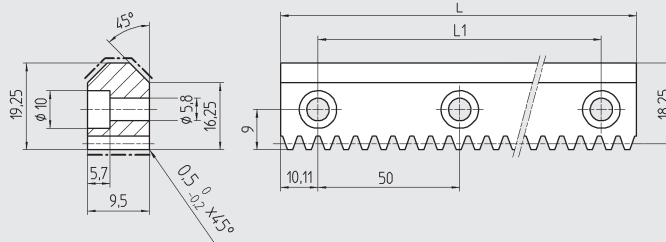
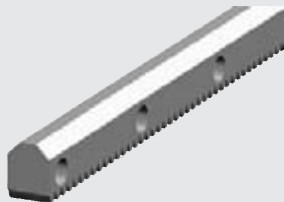


DIN 912 8.8 M_A
M5x12 5,75 Nm

Führungszahnstange

Rail crémaillère de guidage

Guideway vee rack



Type	Part No.	L	L ₁	Module	p	Mat.	m (kg)
FZ 10 G	900 055	870,22	850	1,0	3,142	58CrMoV4 1.7792	1,15
p (mm)	Teilung, pas, pitch						

hart, tempéré
Quality
6h23

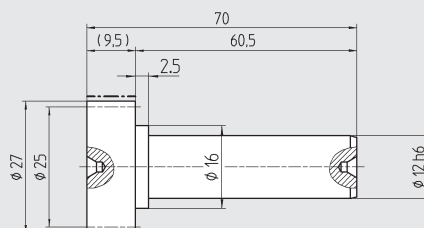
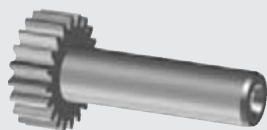


Einbau
Montage / Assembly
Seite / Page 01.71

Antriebsritzel

Pignon

Drive pinion



Type	Part No.	z	Module	p	Mat.	m (kg)
WR 10.1	201025	25	1,0	3,142	16MnCr5 1.7131	0,09
p (mm)	Teilung, pas, pitch					

hart, tempéré
Quality
6f24