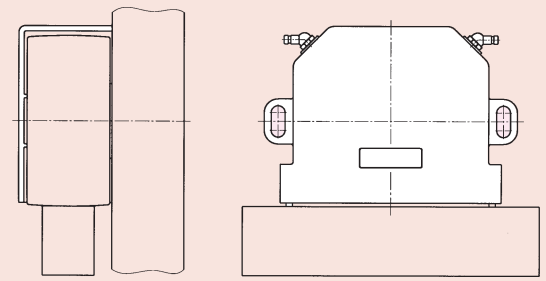


BAUGRÖSSE 25

TAILLE 25
SIZE 25

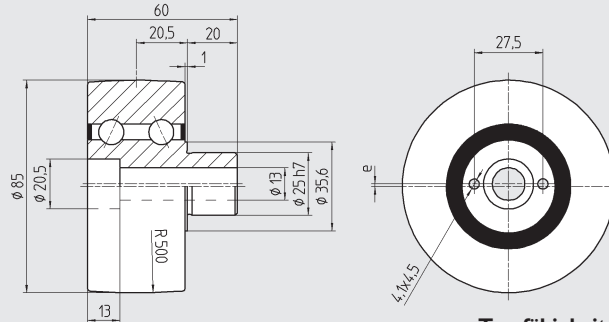


Konstruktionsabmasse
Cotes de montage
Mounting dimensions

Laufrolle

Galet de roulement

Plain roller



DIN 912 8.8 M_A
M12x60 83 Nm

Tragfähigkeit / Capacité de charge / Load carrying capacity

Type	Part No.	Excenter	G _a (µm)	Mat.	m (kg)	C _{0w} (N)	C _w ^① (N)	C _w ^② (N)	n _{max} (min ⁻¹)	
LR 25	900 825	1 mm	+8/+27	100Cr6	1.3505	1,1	15 000	16 300	3 530	5 600
LR 25 A	900 826	1 mm	-3/+5	100Cr6	1.3505	1,1	13 500	14 700	3 200	5 600
LR 25 Z	900 827	0 mm	+8/+27	100Cr6	1.3505	1,1	15 000	16 300	3 530	5 600
LR 25 R	900 828	1 mm	+8/+27	X46Cr13	1.4034	1,1	11 000	12 450	2 650	5 600

G_a Axiale Lagerluft, jeu axial, internal axial clearance

Weg, Chemin parcouru, Distance: ① 10⁶m ② 10⁸m

Befestigungsflansch

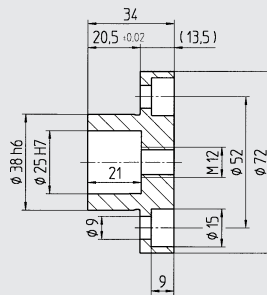
Bride de fixation

Mounting flange

brüniert

noirçi

black oxide



DIN 912 8.8 M_A
M8x20 24 Nm

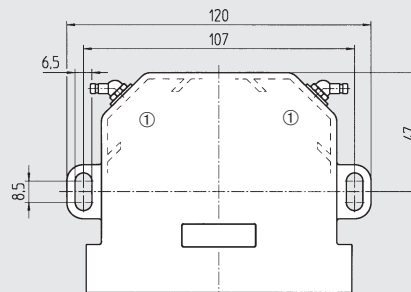
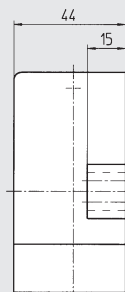
Type	Part No.	Mat.	m (kg)
SP 25	902 026	Ck45	1.1191 0,5
SPE 25	902 043	Ck45	1.1191 0,32

Seite / Page 01.52

Abstreifer-Schmiereinheit

Racleur graisseur

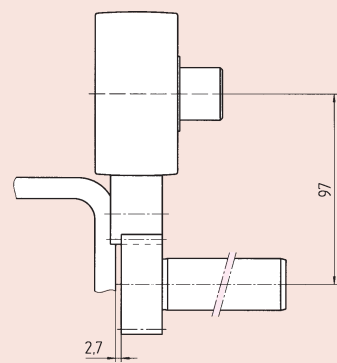
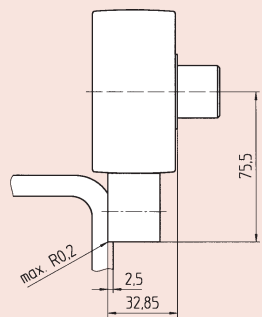
Wiper and lubrication unit



DIN 912 8.8 M_A
M6x25 8.6 Nm

① Ölgetränkter Filz
Feutre imbibé d'huile
Oil soaked felt inserts

Type	Part No.	Mat.	m (kg)
RAL 25	900 048	PA-6/POM	0,06

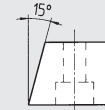
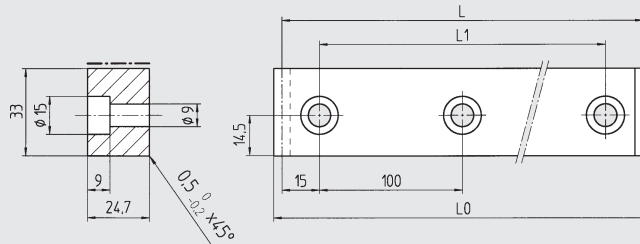
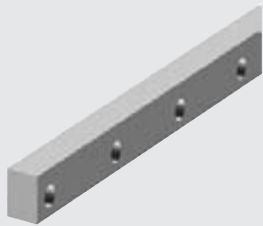


Konstruktionsabmasse
Cotes de montage
Mounting dimensions

Laufschiene

Rail de roulement

Guideway flat rail



Type	Part No.	L	L ₀	L ₁	Mat.	m (kg)
LS 250	900 625	230	236.62	200	58CrMoV4 1.7792	7,60
	900 626	930	936.62	900	58CrMoV4 1.7792	5,75
	900 627	630	636.62	600	58CrMoV4 1.7792	3,80
	900 628	330	336.62	300	58CrMoV4 1.7792	1,95
LS 250 R	901 003	630	636.62	600	X42Cr13 1.2083	3,80



DIN 912 8.8 M_A
M8x25 24 Nm

Laufzahnstange

Rail crémaillère de roulement

Guideway rack

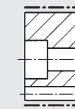
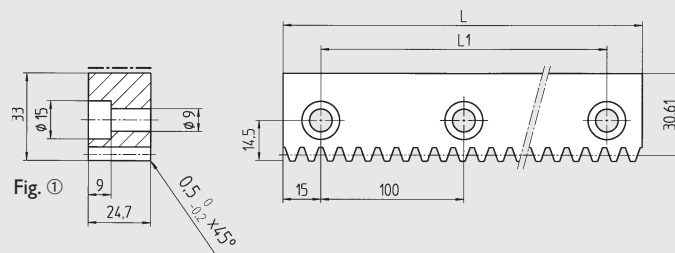
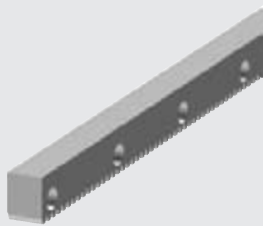


Fig. ②

Type	Part No.	L	L ₁	Module	p	Fig.	Mat.	m (kg)
LZ 25	900 425	1230	1200	2.3873	7,50	①	58CrMoV4 1.7792	7,00
	900 426	930	900	2.3873	7,50	①	58CrMoV4 1.7792	5,25
	900 427	630	600	2.3873	7,50	①	58CrMoV4 1.7792	3,60
	900 428	330	300	2.3873	7,50	①	58CrMoV4 1.7792	1,90
LZ 25 G	900 078	1230	1200	2.3873	7,50	②	58CrMoV4 1.7792	7,00
	900 079	330	300	2.3873	7,50	②	58CrMoV4 1.7792	1,90
LZ 25 R	901 008	630	600	2.3873	7,50	②	X42Cr13 1.2083	3,60

weich, soft
Quality
7h25

hart, trempé
Quality
6h23



Einbau
Montage / Assembly
Seite / Page 01.71

Antriebsritzel

Pignon

Drive pinion

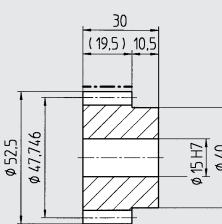
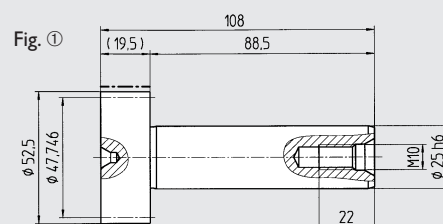
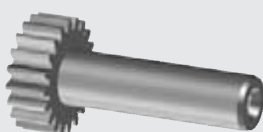


Fig. ②

Type	Part No.	z	Module	p	Fig.	Mat.	m (kg)
WR 25	900 925	20	2.3873	7,50	①	16MnCr5 1.7131	0,6
MR 7,5	154 075	20	2.3873	7,50	②	16MnCr5 1.7131	0,35

hart, trempé
Quality
6f24

p (mm) Teilung, pas, pitch