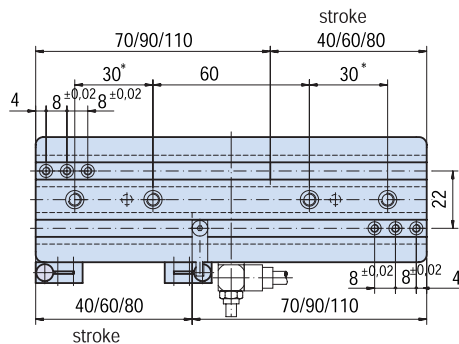
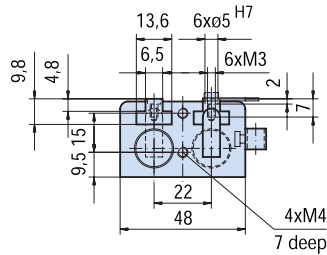
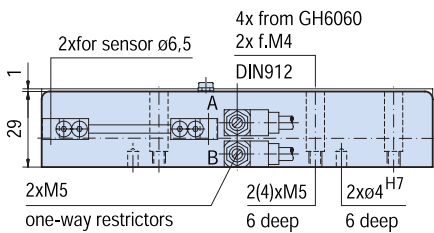
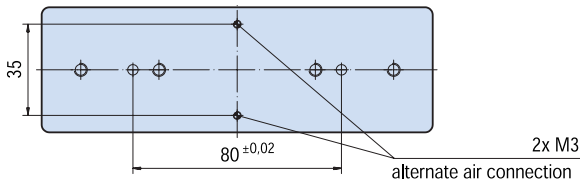


Max Allowable Forces on Jaws

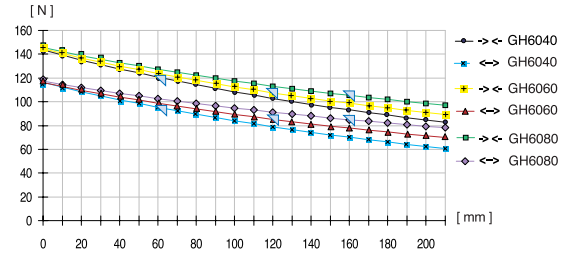


* from GH 6060 on

Long-stroke gripper with T-slot guide

Advantages, benefits, comparisons and tips! Stacks of information all about this product are on page 87.

Gripping force as a function of jaw length



Colored area: increased wear and tear to be expected

Order no.:

GH6040	GH6060	GH6080			
--------	--------	--------	--	--	--

Drive:

pneum.	pneum.	pneum.			
--------	--------	--------	--	--	--

Stroke per jaw [mm]:

40	60	80			
----	----	----	--	--	--

Gripping force in closing [N]:

145	145	145			
-----	-----	-----	--	--	--

Gripping force in opening [N]:

115	115	115			
-----	-----	-----	--	--	--

Self-locking via:

DSV1/8	DSV1/8	DSV1/8			
--------	--------	--------	--	--	--

Closing time/opening time [s]:

0,3	0,35	0,4			
-----	------	-----	--	--	--

Repeatability ± [mm]:

0,05	0,05	0,05			
------	------	------	--	--	--

Min./max. operating pressure [bar]:

4 / 10	4 / 10	4 / 10			
--------	--------	--------	--	--	--

Air volume per cycle [cm³]:

20	30	40			
----	----	----	--	--	--

Min./max. operating temperature [°C]:

5 / 80	5 / 80	5 / 80			
--------	--------	--------	--	--	--

Temp. resistant version up to 150° C [add to part number]:

T3	T3	T3			
----	----	----	--	--	--

Piston diameter [mm]:

14	14	14			
----	----	----	--	--	--

Weight [kg]:

0,45	0,59	0,75			
------	------	------	--	--	--

All data measured at 6 bar.

See Page 87 for Accessory list.