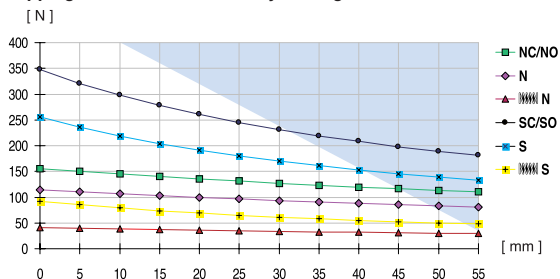


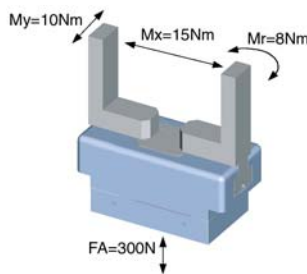
# Parallel gripper with T-slot guide

Advantages, benefits, comparisons and tips!  
Stacks of information all about this product are  
on page 17.

## Gripping force as a function of jaw length



Colored area: increased wear and tear to be expected

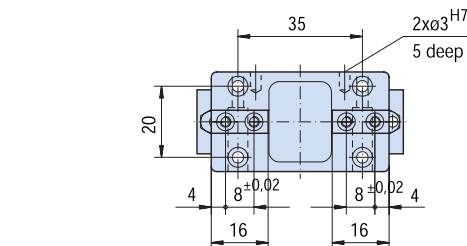
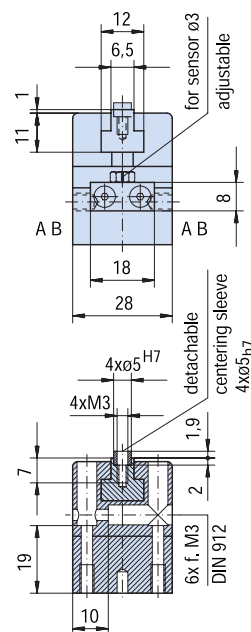
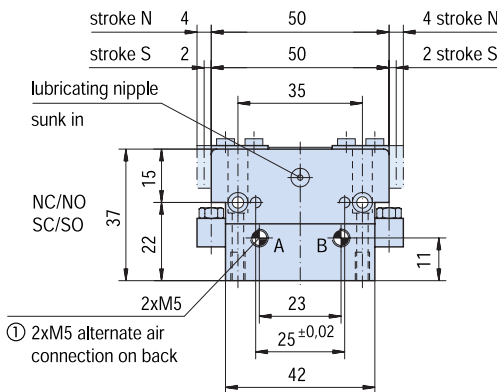
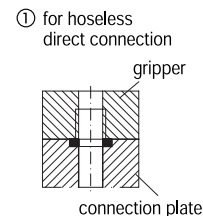
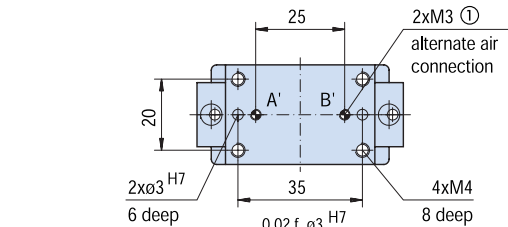
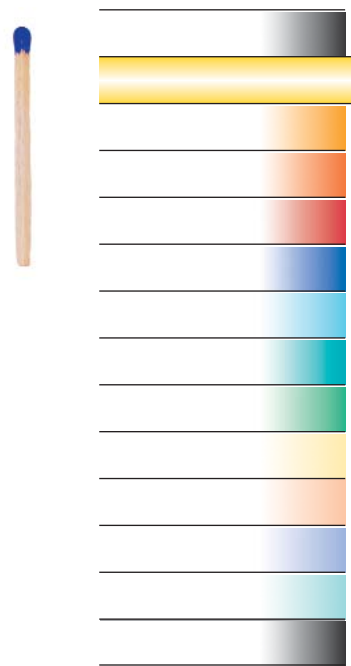


Max Allowable Forces  
on Jaws

Order no.:					
GP404 N	GP404 NC	GP404 NO	GP404 S	GP404 SC	GP404 SO
Drive:					
pneum.	pneum.	pneum.	pneum.	pneum.	pneum.
Stroke per jaw [mm]:					
4	4	4	2	2	2
Gripping force in closing and opening [N]:					
115	-	-	255	-	-
Gripping force in closing [N]:					
-	155	-	-	350	-
Gripping force in opening [N]:					
-	-	155	-	-	350
Self-locking via:					
DSV1/8	Spring	Spring	DSV1/8	Spring	Spring
Closing time/opening time [s]:					
0,008	0,012	0,012	0,008	0,012	0,012
Repeatability ± [mm]:					
0,025	0,025	0,025	0,025	0,025	0,025
Min./max. operating pressure [bar]:					
3 / 8	5 / 8	5 / 8	3 / 8	5 / 8	5 / 8
Air volume per cycle [cm³]:					
3	5	5	3	5	5
Min./max. operating temperature [°C]:					
5 / 80	5 / 80	5 / 80	5 / 80	5 / 80	5 / 80
Temp. resistant version up to 150C [add to part number]:					
T2	T2	T2	T2	T2	T2
Piston diameter [mm]:					
20	20	20	20	20	20
Weight [kg]:					
0,13	0,17	0,17	0,13	0,17	0,17

All data measured at 6 bar.

See Page 17 for Accessory list.



N/S

