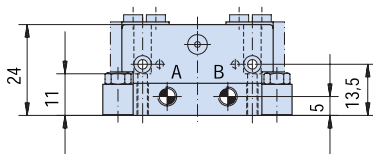
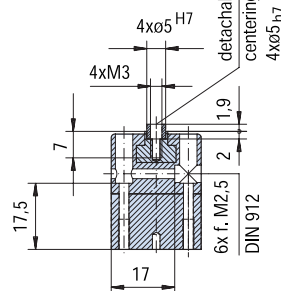
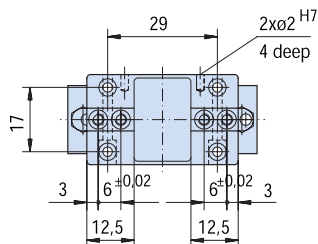
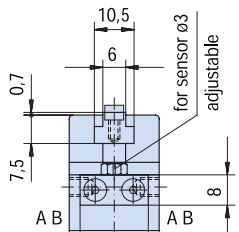
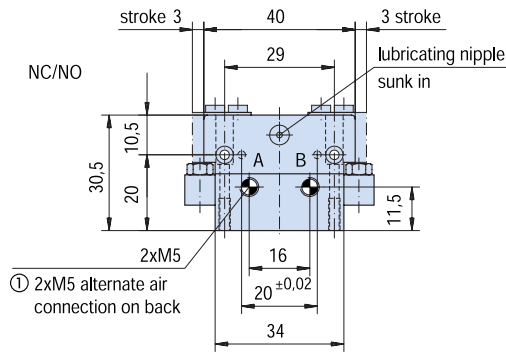
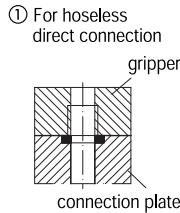
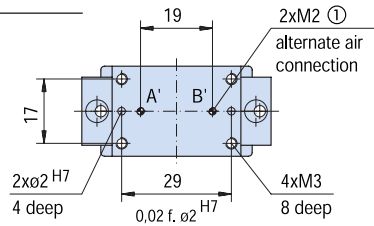
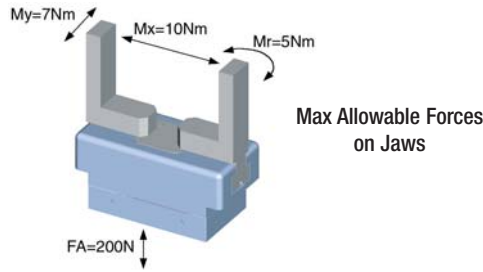
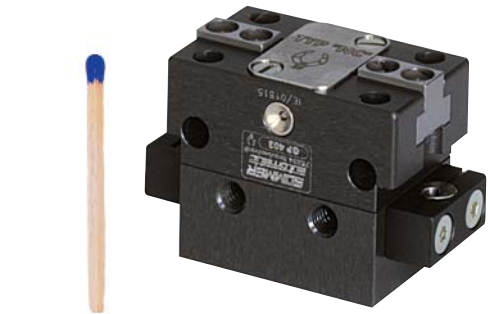
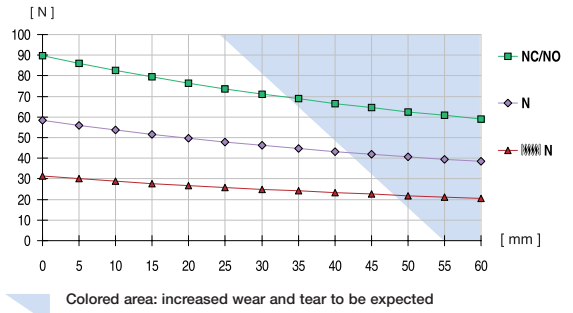


Parallel gripper with T-slot guide

Advantages, benefits, comparisons and tips!
Stacks of information all about this product are
on page 17.

Gripping force as a function of jaw length



Order no.:					
GP403 N	GP403 NC	GP403 NO			
Drive:					
pneum.	pneum.	pneum.			
Stroke per jaw [mm]:					
3	3	3			
Gripping force in closing and opening [N]:					
58	-	-			
Gripping force in closing [N]:					
-	90	-			
Gripping force in opening [N]:					
-	-	90			
Self-locking via:					
DSV1/8	Spring	Spring			
Closing time/opening time [s]:					
0,006	0,01	0,01			
Repeatability ± [mm]:					
0,025	0,025	0,025			
Min./max. operating pressure [bar]:					
3 / 8	5 / 8	5 / 8			
Air volume per cycle [cm³]:					
2	3	3			
Min./max. operating temperature [°C]:					
5 / 80	5 / 80	5 / 80			
Temp. resistant version up to 150° C [add to part number]:					
T2	T2	T2			
Piston diameter [mm]:					
16	16	16			
Weight [kg]:					
0,08	0,1	0,1			

All data measured at 6 bar.

See Page 17 for Accessory list.