

**Parallel gripper**

Three-jaw gripper

Angle gripper

Internal-hole gripper

Other grippers

Electric gripper

GP1224

GP1240

**GP1260**

GP1280

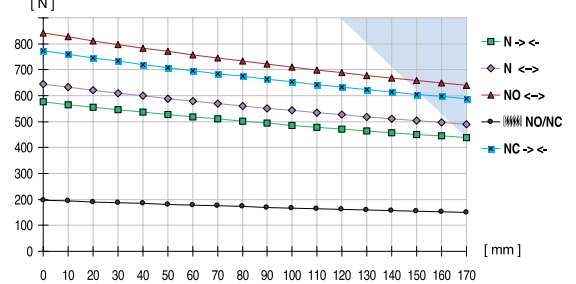
Universal jaw

# Parallel gripper

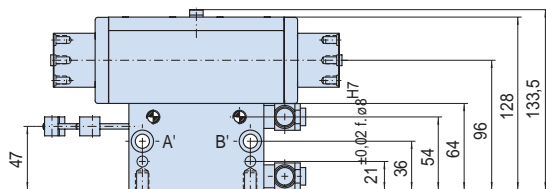
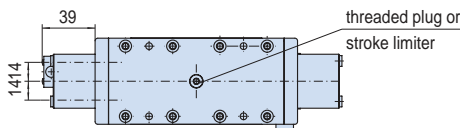
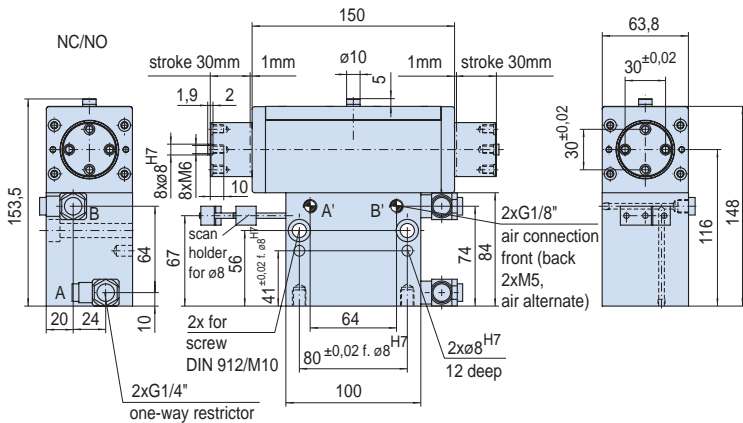
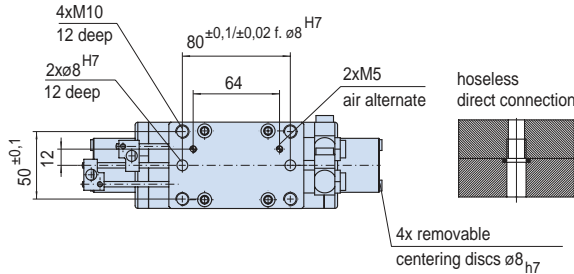
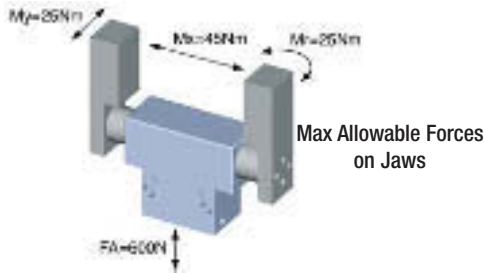
with sealed round guide

Advantages, benefits, comparisons and tips!  
Stacks of information all about this product are on page 53.

### Gripping force as a function of jaw length



Colored area: increased wear and tear to be expected



Order no.:					
GP1260 N	GP1260 NC	GP1260 NO			
<b>Drive:</b>					
pneum.	pneum.	pneum.			
<b>Stroke per jaw [mm]:</b>					
30	30	30			
<b>Gripping force in closing and opening [N]:</b>					
580	-	-			
<b>Gripping force in closing [N]:</b>					
-	780	-			
<b>Gripping force in opening [N]:</b>					
-	-	830			
<b>Self-locking via:</b>					
DSV1/8	Spring	Spring			
<b>Closing time/opening time [s]:</b>					
0,08	0,1	0,1			
<b>Repeatability ± [mm]:</b>					
0,05	0,05	0,05			
<b>Min./max. operating pressure [bar]:</b>					
4 / 8	5 / 8	5 / 8			
<b>Air volume per cycle [cm³]:</b>					
115	145	145			
<b>Min./max. operating temperature [°C]:</b>					
5 / 80	5 / 80	5 / 80			
<b>Temp. resistant version up to 150° C [add to part number]:</b>					
T3	T3	T3			
<b>Piston diameter [mm]:</b>					
50	50	50			
<b>Weight [kg]:</b>					
3,9	4,3	4,3			

All data measured at 6 bar.

See Page 53 for Accessory list.