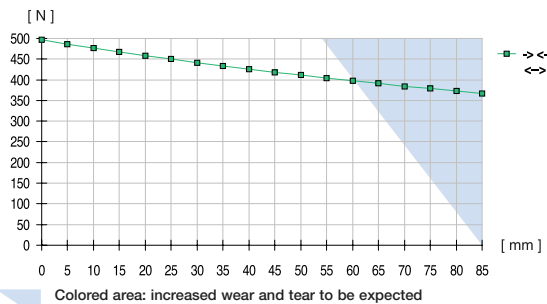


Parallel gripper

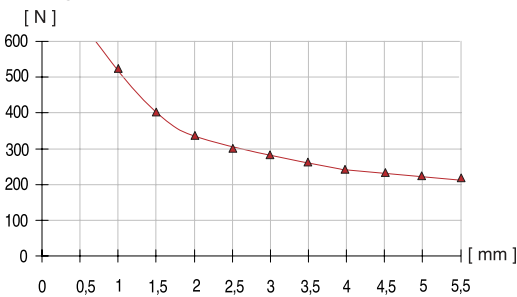
with eccentric cam

Advantages, benefits, comparisons and tips!
Stacks of information all about this product are on page 75.

Gripping force as a function of jaw length
(measured at 1 mm before the end of the stroke)



Gripping force as a function of stroke

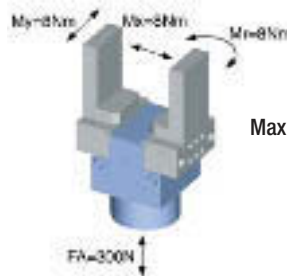


Before end of stroke

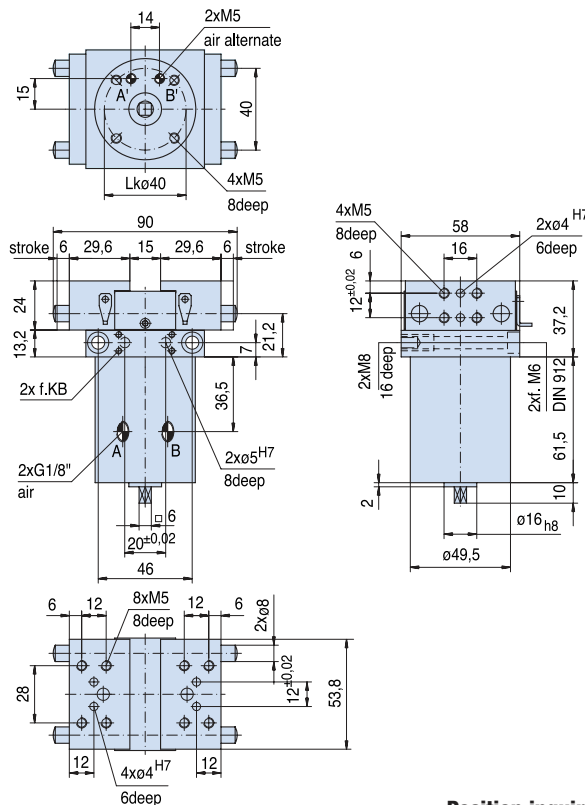
Order no.:			
GP80			
Drive:			
pneum.			
Stroke per jaw [mm]:			
6			
Gripping force in closing and opening [N]:			
500			
Self-locking via:			
mech.			
Closing time/opening time [s]:			
0,06			
Repeatability ± [mm]:			
0,05			
Min./max. operating pressure [bar]:			
3 / 8			
Air volume per cycle [cm³]:			
27			
Min./max. operating temperature [°C]:			
5 / 60			
Weight [kg]:			
0,828			

All data measured at 6 bar.

See Page 75 for Accessory list.



Max Allowable Forces on Jaws



Position inquiry:

- Order no.: DB20**
Rotation limiter with stop
- Order no.: AI-M8x1-38**
Stop-Stroke adjusting screw
- Order no.: NJ12-E2**
Proximity switch

