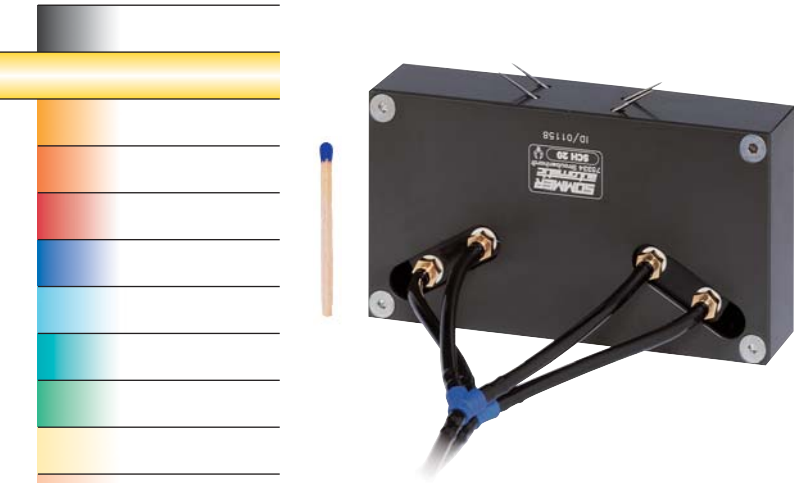


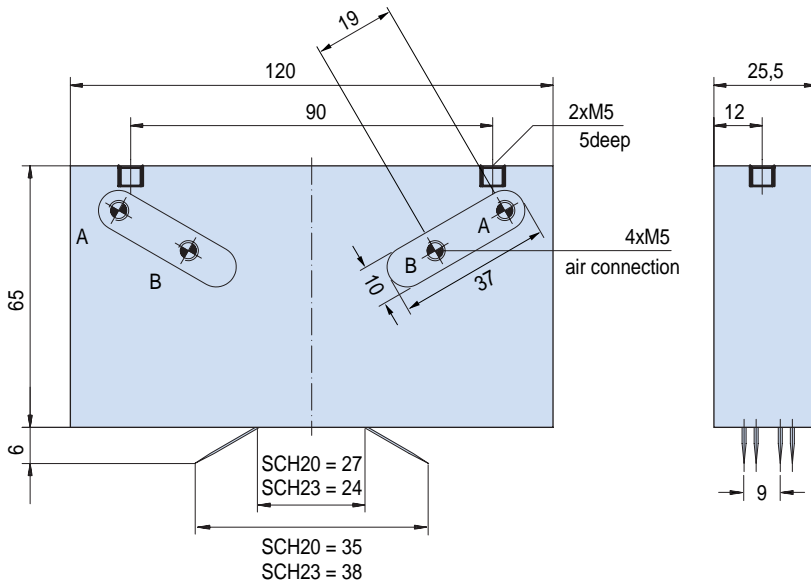
Parallel gripper		Three-jaw gripper		Angle gripper		Internal-hole gripper		Other grippers		Electric gripper		
SCH20	SCH23	ST36	ST40	ZK22	ZK33	GS65	RGO-30	RG10-60	SPG30-95	GF40	GF41	HM

Needle gripper

Advantages, benefits, comparisons and tips!
Stacks of information all about this product are on page 171.



Order no.:					
SCH20	SCH23				
Drive					
pneum.	pneum.				
Stroke adjustable [mm]:					
0-6	0-6				
Number of needles (pcs):					
4	4				
Needle diameter [mm]:					
1,3	3				
Gripping force in extraction [N]:					
35	35				
Self-locking via:					
DSV 1/8	DSV 1/8				
Extend/retract time [s]:					
0,02	0,02				
Repeatability ± [mm]:					
0,02	0,02				
Min./max. operating pressure [bar]:					
4/8	4/8				
Air volume per cycle [cm ³]:					
5	5				
Min./max. operating temperature. [°C]:					
5/80	5/80				
temp. resistant version up to 150° C [add to part number]:					
T2	T2				
Weight [kg]:					
0,35	0,37				



All data measured at 6 bar.

See Page 171 for Accessory list.

Parallel gripper		Three-jaw gripper		Angle gripper		Internal-hole gripper		Other grippers		Electric gripper		
SCH20	SCH23	ST36	ST40	ZK22	ZK33	GS65	RG0-30	RG10-60	SPG30-95	GF40	GF41	HM

Needle gripper

Advantages, benefits, comparisons and tips!
Stacks of information all about this product are on page 171.

Order no.:					
ST36	ST40				
Drive					
pneum.	pneum.				
Stroke adjustable [mm]:					
0-1,5	0-2				
Number of needles (pcs):					
20	40				
Needle diameter [mm]:					
0,69	0,69				
Gripping force in extraction [N]:					
55	55				
Self-locking via:					
DSV 1/8	DSV 1/8				
Extend/retract time [s]:					
0,03	0,03				
Repeatability ± [mm]:					
0,01	0,01				
Min./max. operating pressure [bar]:					
4/8	4/8				
Air volume per cycle [cm³]:					
1	3				
Min./max. operating temperature. [°C]:					
5/80	5/80				
temp. resistant version up to 150° C [add to part number]:					
T1	T1				
Weight [kg]:					
0,2	0,5				

All data measured at 6 bar.

See Page 171 for Accessory list.

