



## Three-jaw gripper

with cam drive and T-slot guide

Advantages, benefits, comparisons and tips!  
Stacks of information all about this product are  
on page 139.

Order no.:

GD29

Drive:

pneum.

Stroke per jaw [mm]:

1,5

Gripping force in closing and opening [N]:

45

Self-locking via:

DSV1/8

Closing time/opening time [s]:

0,03

Repeatability  $\pm$  [mm]:

0,02

Min./max. operating pressure [bar]:

4/8

Air volume per cycle [cm<sup>3</sup>]:

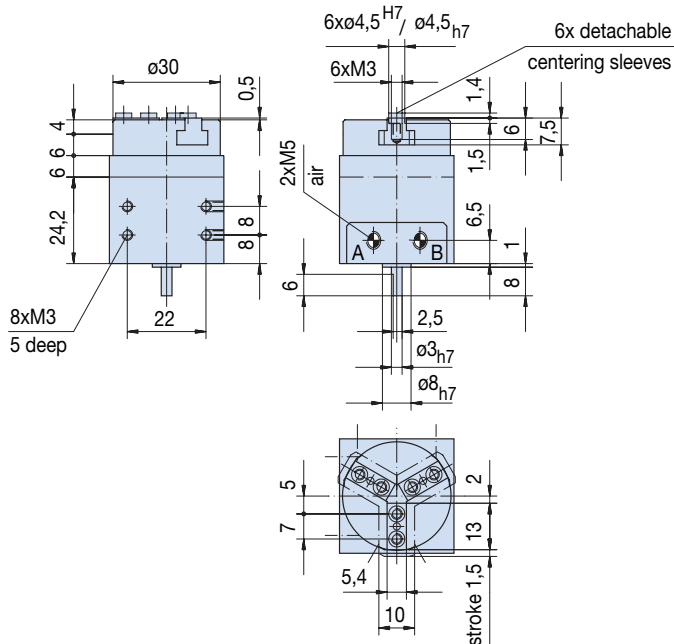
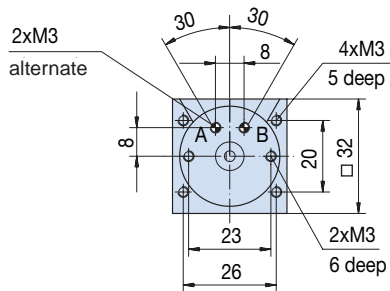
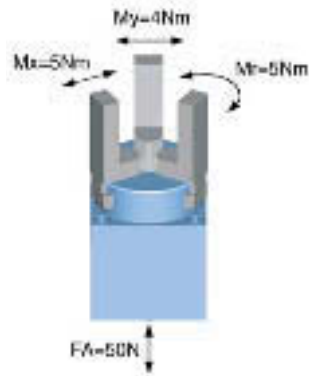
2

Min./max. operating temperature. [°C]:

5/60

Weight [kg]:

0,1



All data measured at 6 bar.

### Position sensing:

Order no. DB1

Rotation limiter

Order no. NJ3-E2/02

Stop with integrated inductive proximity switch

