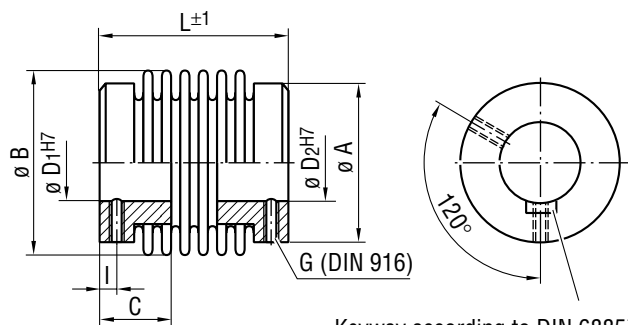


Metal bellows couplings

Series EK – miniature



Keyway according to DIN 6885¹⁾ on demand

Technical Data, Dimensions

TYPE	DIMENSIONS (mm)							TECHNICAL DATA					
	Ø A	Ø B	C	L (±1)	D ₁ /D ₂ (H7) from/to	G (DIN 916)	I (mm)	Nominal- torque T _{KN} (Nm)	Misalignment (mm)		Torsional stiffness C _{T dyn} (Nm/rad)	Moment of inertia J (g cm ²)	Weight m (g)
									radial ΔK _r	axial ΔK _a			
EK 1/22	10	10	6	22	1–4	M3	2	0.1	0.12	0.2	65	0.7	5
EK 4/20	13	15	6	20	3–8	M3	2	0.4	0.1	0.2	254	2.0	6
EK 4/23	13	15	6	23	3–8	M3	2	0.4	0.15	0.3	190	2.0	6
EK 4/26	13	15	6	26	3–8	M3	2	0.4	0.2	0.4	152	2.0	6
EK 9/21	13	15	6	21	3–8	M3	2	0.9	0.1	0.2	507	2.0	6
EK 9/25	13	15	6	25	3–8	M3	2	0.9	0.15	0.3	380	2.3	7
EK 9/28	13	15	6	28	3–8	M3	2	0.9	0.2	0.4	305	2.6	8
EK 15/25	19	19	12	25	3–10	2 x M4	3	1.5	0.1	0.25	748	7.5	17
EK 15/30	19	19	12	30	3–10	2 x M4	3	1.5	0.15	0.4	701	8	19
EK 20/23	21	24	12	23	3–12	2 x M4	3	2	0.1	0.3	1530	14	22
EK 20/29	21	24	12	29	3–12	2 x M4	3	2	0.2	0.4	1290	16	24
EK 20/33	21	24	12	33	3–12	2 x M4	3	2	0.25	0.5	1030	17	26
EK 45/39	29	32	16	39	6–15	2 x M6	4	4.5	0.1	0.3	6450	68	54
EK 45/48	29	32	16	48	6–15	2 x M6	4	4.5	0.2	0.5	4030	73	58
EK 100/44	36	40	20	44	6–19	2 x M6	4	10	0.15	0.4	8070	200	104
EK 100/54	36	40	20	54	6–19	2 x M6	4	10	0.25	0.5	6720	220	114

Angular misalignment:

1.2° to 2°, depending on length

Hub bores:

Standard quality of fitting H7.
Custom bores on demand.

Standard bores:

EK 1 Ø 3H7
EK 4-15 Ø 6H7
EK 20 Ø 6H7 und 10H7
EK 45-100 Ø 10H7

Tooling materials:

Hubs made of anodized aluminum, metal bellows made of stainless steel.
Stainless steel version also available.

1) Tolerance of keyway: Standard JS9