

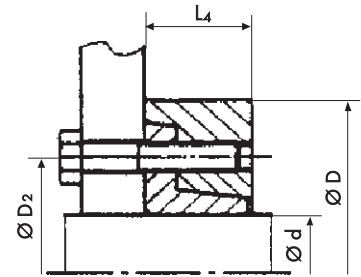
Shrink Disc PSV 5023



Advantages

- transmission of high torque values
- external locking solution
- excellent cyclic running capabilities

Shaft sizes up to 180 mm
Torque up to 104.000 Nm



Style A

Different styles available upon request

Technical Data and Dimensions

Shrink Disc Dimensions					Transmissible Torque T k Nm	Number of locking screws #	Locking screws G DIN 912	Tightening torque of screws TA Nm
Size mm	Ø d mm	Ø D ₂ mm	Ø D mm	L ₄ mm				
50	40	84	115	30	1.400	7	M12	100
	45				2.200			
	50				3.300			
60	50	94	120	34	2.300	9	M12	100
	55				3.500			
	60				4.700			
70	60	112	148	40	5.800	8	M16	240
	65				7.600			
	70				9.400			
80	70	130	170	44	8.000	9	M16	240
	75				10.000			
	80				12.000			
90	80	144	185	50	12.000	12	M16	240
	85				15.000			
	90				18.000			
100	90	156	197	54	16.000	14	M16	240
	95				19.000			
	100				23.000			
110	100	166	215	58	22.000	10	M20	470
	105				26.000			
	110				27.000			
120	110	186	230	65	33.000	14	M20	470
	115				38.000			
	120				43.000			
140	120	216	290	76	39.000	16	M20	470
	130				50.000			
	140				56.000			
160	140	234	320	83	64.000	14	M24	820
	150				77.000			
	160				77.000			
180	160	276	340	94	85.000	16	M24	820
	170				101.000			
	180				104.000			

Additional diameters available upon request. Technical Specifications subject to change without notice.

Order data:

60 x 50 PSV 5023-A
Size x d Type

Applications

- press drives
- wind mills
- gearboxes
- conveyors
- similar applications involving hollow shafts and shafts

Technical Details

- tolerance $\varnothing d$ h9
- surface roughness R_a max 16 μ m for shaft and hub