

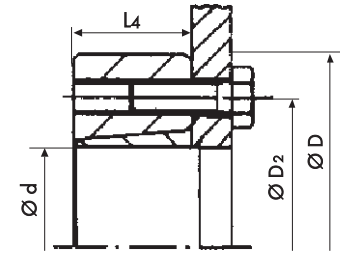
Shrink Disc PSV 5012



Advantages

- for the connection of thin plates with shafts
- eliminates the need for welding parts
- external clamping solution
- good cyclic running capabilities

Shaft sizes up to 70 mm
Torque up to 5.800 Nm



Style A

Different styles available upon request

Technical Data and Dimensions

Shrink Disc Dimensions					Transmissible Torque T Nm	Axial Force F_{ax} kN	Number of locking screws #	Locking screws G DIN 912	Tightening torque of screws T_A Nm
Size mm	Ø d mm	Ø D mm	Ø D ₂ mm	L ₄ mm					
10	11	39	25	10	20	3,5	3	M6	12
	10				20	4			
	9				20	4,5			
12	13	44	28	13	50	8	3	M6	12
	12				50	8			
	11				50	9			
15	16	52	36	15	130	16	3	M8	29
	15				130	17			
	14				130	19			
20	20	60	42	17	200	20	3	M8	29
	18				200	22			
	16				200	25			
25	25	66	48	19	340	27	5	M8	29
	22				340	31			
	20				340	34			
30	30	76	56	21	550	38	6	M8	29
	28				550	39			
	25				550	44			
40	40	96	70	25	1.060	53	6	M10	58
	35				1.060	61			
	30				1.060	71			
50	50	112	84	30	2.200	88	7	M12	100
	45				1.800	80			
	40				1.000	50			
60	60	120	94	34	3.200	107	9	M12	100
	55				3.200	116			
	50				2.300	92			
70	70	148	112	40	5.800	116	8	M16	240
	65				5.800	179			
	60				4.500	150			

Additional diameters available upon request. Technical Specifications subject to change without notice.

Order data:

60 x 55 PSV 5012-A

Size x d Type

Applications

- brake plates
- drums
- flywheels
- hollow shaft motors
- couplings

Technical Details

- tolerance $\varnothing d$ h9
- surface roughness R_f max 16 μ m for shaft and hub