

# Locking Assembly PSV 2061

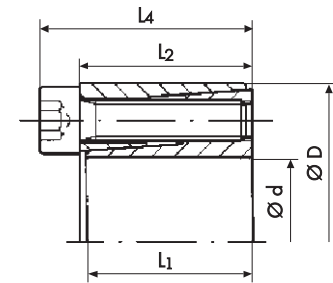


## Advantages

- limited space requirements
- self centering
- very small shaft diameters possible

Shaft sizes up to 50 mm

Torque up to 1.900 Nm



## Technical Data and Dimensions

Locking Assembly Dimensions					Transmissible Torque T Nm	Axial Force $F_{ax}$ kN	Contact surface pressure between locking assembly and		Locking screws G DIN 912	Tightening torque of screws $T_A$ Nm
$\varnothing d$ mm	$\varnothing D$ mm	$L_1$ mm	$L_2$ mm	$L_4$ mm			Shaft $P_w$ N/mm <sup>2</sup>	Hub $P_N$ N/mm <sup>2</sup>		
6	16	10,5	11	13,5	6	2,0	150	55	M2,5	1,2
6,35	16	10,5	11	13,5	6	2,0	140	55	M2,5	1,2
7	17	10,5	11	13,5	8	2,0	125	55	M2,5	1,2
8	18	10,5	11	13,5	10	2,5	110	50	M2,5	1,2
9	20	12,5	13	15,5	15	3,0	120	55	M2,5	1,2
9,53	20	12,5	13	15,5	15	3,0	110	55	M2,5	1,2
10	20	12,5	13	15,5	15	3,0	110	55	M2,5	1,2
11	22	12,5	13	15,5	18	3,0	100	20	M2,5	1,1
12	22	12,5	13	15,5	20	3,0	90	50	M2,5	1,2
14	26	16,5	17	20	35	5,0	105	55	M3	2,1
15	28	16,5	17	20	40	5,0	100	50	M3	2,1
16	32	20	17	21	70	8,0	130	65	M4	4,9
17	35	20	21	25	75	8,0	120	60	M4	4,9
18	35	20	21	25	80	8,0	115	60	M4	4,9
19	35	20	21	25	85	8,0	110	60	M4	4,9
20	38	20	21	26	150	15,0	140	75	M5	9,7
22	40	20	21	26	160	14,0	130	70	M5	9,7
24	47	25	26	32	250	20,0	140	75	M6	16,5
25	47	25	26	32	260	20,0	135	75	M6	16,5
25,4	47	25	26	32	265	20,0	130	75	M6	16,5
28	50	25	26	32	440	30,0	185	100	M6	16,5
30	55	25	26	32	470	30,0	175	95	M6	16,5
32	55	25	26	32	500	30,0	165	95	M6	16,5
35	60	28	29	37	730	40,0	165	95	M6	16,5
38	65	28	29	37	800	40,0	155	90	M6	16,5
40	65	28	29	37	840	40,0	145	90	M6	16,5
42	75	35	36	44	1.200	55,0	165	90	M8	40
45	75	35	36	44	1.300	55,0	155	90	M8	40
48	80	35	36	44	1.850	75,0	195	115	M8	40
50	80	35	36	44	1.900	75,0	185	115	M8	40

Additional diameters available upon request. Technical Specifications subject to change without notice.

### Order data:

**20 x 38 PSV 2061**  
d x D Type

### Applications

- linear motion
- packaging equipment
- automation and handling equipment
- similar applications with tight space restrictions, requiring low surface pressure
- pulleys
- textile machinery

### Technical Details

- self-centering
- tolerances H8/h8
- surface roughness  $R_t$  max 10µm for shaft and hub